



## PURESEAL BACCLEAR PRO

PureSeal **BacClear Pro** is a professional grade biocide that is fast acting against biological growth on external hard surfaces. Our product is registered on the HSE COPR database and is licensed to use a surface biocide.

**BacClear Pro** can be used on most surfaces and 1 coat applied after steam/pressure cleaning is enough to keep microbial surface contaminants at bay. Simply apply **BacClear Pro** on to the clean surface and leave it to soak in and dry.

### BACCLEAR PRO FOR AMENITIES

#### STRUCTURES AND GROUND SURFACES

**BacClear Pro** is a concentrated BAC50 based liquid biocide that has been formulated to clean and protect a wide range of external hard surfaces. In this guide we are going to explain the best and safest way to apply **BacClear Pro** to amenities.

**BacClear Pro** is a 50% BAC50 concentrate which, in our opinion is better suited to be used as a pre or post treatment after steam/low pressure cleaning. It is bleach, acid and solvent free. This high purity concentrate, diluted to the correct ratio, will protect against algae and other biofilms.

**BacClear Pro** can be applied to vertical structures and ground surfaces to kill off any unwanted biofilm that remain after cleaning. It can also be used to self cleanse depending on the severity of the contamination. For the self cleanse approach, we recommend using our **BioClear Pro** product. Some applicators will use **BacClear Pro** as a self cleansing biocide and do get fantastic results, but essentially the decision on what biocide to use is the choice of the biocide applicator. The amount of contamination present determines the dilution ratio and application rate. Care must be taken when applying **BacClear Pro** and plants must be covered prior to application or any overspray must be rinsed off plants and foliage with clean water,

It is important to keep animals away from any newly treated surface until the area is completely dry.



#### SURFACE PREPARATION

When applying **BacClear Pro** to a ground surface, it is recommended that any moss and any other loose material is removed prior to treatment. Steam/pressure washing is ideal to ensure as much as the surface contaminants are removed from the surface. An initial inspection of the area will help you decide at what rate you should dilute the product and at what rate. The table below has been created as guidance and these figures are based on a self cleanse process (apply it and leave it) as general application rates after steam/pressure cleaning should be 1 part product to 30 parts water for ground surfaces applied at a rate of 4-5m<sup>2</sup> per litre. Again, **BioClear Pro** should be used if the applicator is wanting to use the self cleanse process, but applicators can and do get good results with **BacClear Pro**. This is up to the applicator to decide on which biocide to use.

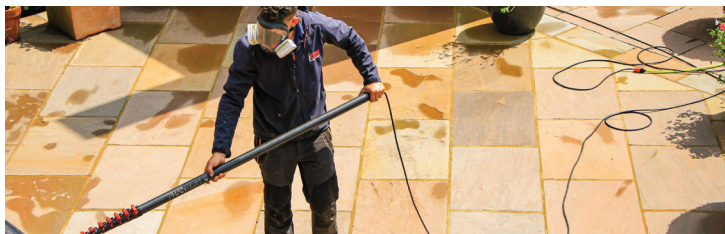
When applying **BacClear Pro** a sprayer gives an even coverage and a visual guidance of the area that has been treated as **BacClear Pro** will foam up as it hits the surface. A sprayer will enable you to apply a weak mix liberally or a strong mix applied thinly. We find the Dosatron D07RE5 is perfect for this type of application as this unit offers a dose rate of 0.8% to 5.5%.

It is best practice to protect any plants, foliage or grass in the vicinity by either spraying them with clean water before and after application or covering them with protective sheeting. Avoid direct spray in to ponds.



## HOW TO APPLY

When applying **BacClear Pro** to external hard surfaces, the dilution and application rates vary. There are many different types/brands of chemical application equipment on the market. This comes down to personal preference. It is important to ensure the equipment you do use can mix **BacClear Pro** to the dilution ratio required.



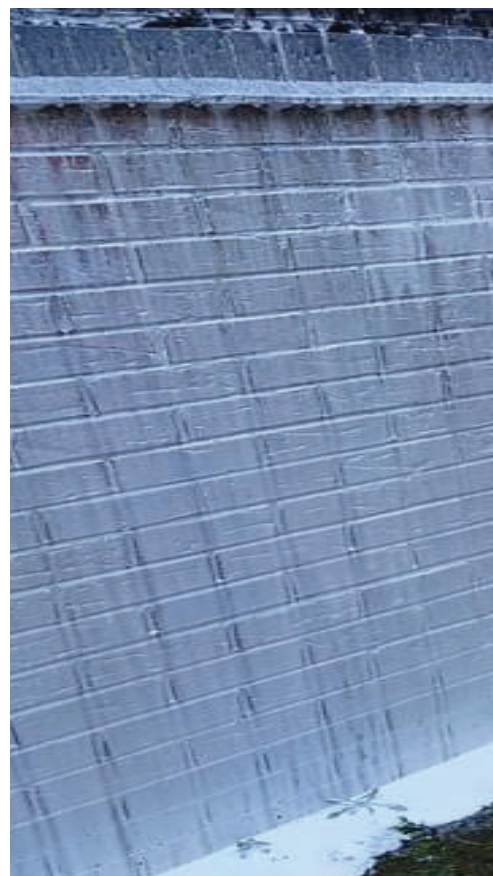
BacClear Pro: Treatment area per litre of concentrate	Ground Surfaces (Stone, Tarmac, Driveways & Patios Etc)		Artificial Turf, Tartan Tracks, MUGA & Wet Pour Playground Etc	Masonry & Stone Walls	Timber Structures Including Decking, Cladding & Fence Panels Etc
	Average Rate Of Infestation	Low Rate Of Infestation	1 to 30: first pass	Apply to Saturation	Apply to Saturation
Dilution rate	1 to 30	1 to 40	1 to 50: follow up	1 to 20	1 to 20
Diluted quantity/litre of concentrate	30 litres	40 litres	30 to 40 litres	20	20
Textured/porous surfaces	4 to 5m <sup>2</sup> /litre = 120 to 150m <sup>2</sup>	4 to 5m <sup>2</sup> /litre = 160 to 200m <sup>2</sup>	4m <sup>2</sup> /litre = 120 to 200m <sup>2</sup>	Porous 2m <sup>2</sup> /litre = 40m <sup>2</sup>	3m <sup>2</sup> /litre = 60m <sup>2</sup>
Smooth or non-absorbent surfaces	6m <sup>2</sup> /litre = 180m <sup>2</sup>	40 litres		Painted 3m <sup>2</sup> /litre = 60m <sup>2</sup>	

When treating ground surfaces it is important to assess the degree of biofilm that has formed on the surface. This way you can use the chart above to help you decide dilution ratio and application rate. Ground surfaces can be natural stone, block paving, decking, sports surfaces, paths, patios etc. 1 coat applied is enough to protect the surface once steam/pressure cleaned. Artificial grass and astro turf can be treated with **BacClear Pro**.

Before you apply the product to the surface it is important that you sweep the surface to remove any leaves or loose contamination. For larger areas specialist brushing equipment may be required. It is important that you apply enough product to treat both sides of each blade of grass. As per the chart above, 2 treatments are required. Decking and timber structures can also be treated.

It is important to treat decking and timber whilst its dry to ensure the product can penetrate the wood as much as possible paying more attention to joints and laps. If you are applying a timber treatment like **PureSeal DeckShield Pro**, or a decking oil, this must be done after **BacClear Pro** has been applied to the surface and has completely dried. Wet pour and rubber surfaces can be treated using the dilution ratio and application rate in the chart above and 1 treatment is usually suffice depending on the porosity of the surface.

For vertical masonry walls one treatment of **BacClear Pro** is enough to clean and protect the surface. The most effective way of treating walls is by using a pole attached to a sprayer with a brush head which will enable you to work the product in to the surface.



## HOW BACCLEAR PRO WORKS



Once BacClear Pro has been applied to a surface after cleaning, the product penetrates the pores and dwells beneath the surface where it provides continuous protection until the decontamination has been completed.



## HOW LONG DOES PROTECTION LAST

**BacClear Pro** should be expected to keep light staining away from ground surfaces for 18-24 months depending on the surface and environment. This period can be prolonged with a maintenance plan to be agreed between the applicator and their customer.



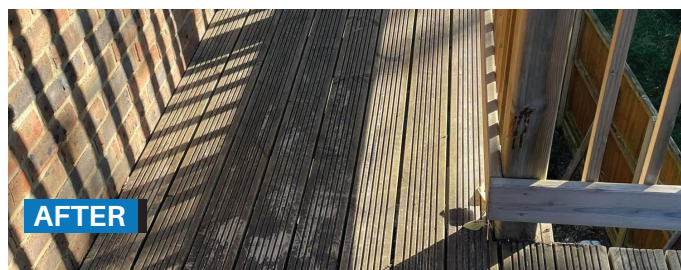
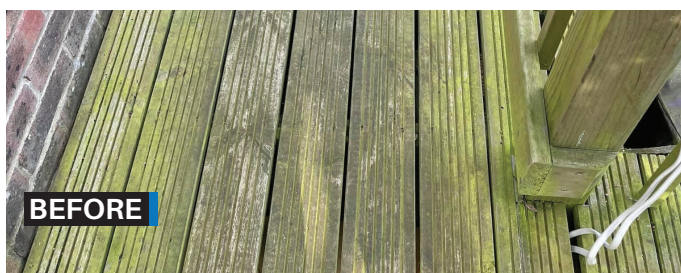
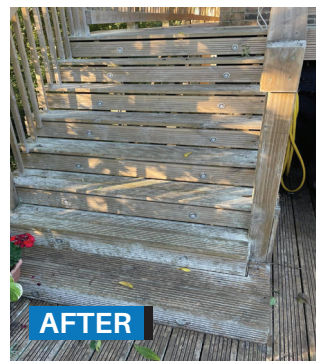
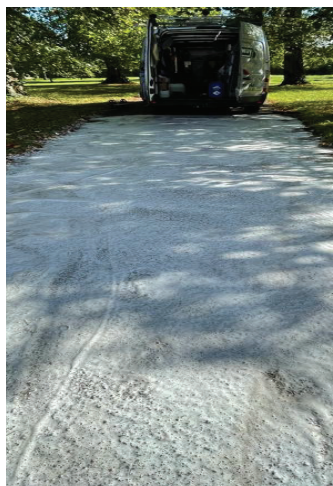
## HEALTH AND SAFETY



All applicators should wear gloves and face protection. Any spray back or drift should be taken into consideration and prevented on the day of application.

We Highly recommend spraying all plants and foliage in the vicinity with clean water prior to and after application to prevent scorch marks.

Children, pets and other animals should be kept away from any spills or wet surfaces until the treated or contaminated surface is completely dry.



0333 577 8086  
info@puresealservices.co.uk  
www.puresealservices.co.uk  
www.labelcompliantbio.org

### REGISTERED OFFICE:

PureSeal Services UK Ltd,  
Basford Old Creamery, Newcastle Road,  
Chorlton, Crewe, Cheshire, CW2 5NQ

